

Visit us online at northwesternnews.rangerpulse.com

Smile of the Week



Isileli Ofu, Student support services advisor, smiles because the positive atmosphere Northwestern radiates reminds him of his home.

If you'd like to be the Smile of the Week, please send in a photo of you smiling and a short description of why you're smiling to nwnews@nwosu.edu!

Spring Break photo contest



Did you enjoy the "Can you guess where this is on campus" photo contest?

We hope you did because the Northwestern News will be having another photo contest following spring break.

Details
~Page 3~

INSIDE

News

Page 2

Editorial

Page 3

Opinion

Page 4

Feature

Page 5, 6 & 7

Entertainment

Page 8-9

Sports

Page 10-11

The Buzz

Page 12

Participation lacking

Student life event cancellation raises questions

By TAYLOR MORRIS
Student Reporter

The Student Athlete Advisory Committee was planning on hosting a chili cook off to benefit the Make-A-Wish foundation this past Saturday.

It was suppose to be an event jam-packed with some friendly competition, taste testing, drinks, and desserts for students to take part in and enjoy. However, once again due to a lack of student participation another event on Northwestern's campus was cancelled.

According to Student Government Association (SGA) president Nick Villalobos, the issue of low student participation has actually always been present since he has been associated with SGA.

Last spring there was supposed to be a Ranger Lip Sync Battle event that would have groups of students around campus compete with one another by lip syncing and performing an appropriate song of their choice.



The lack of student's participation in student life events has unfortunately been a recurring issue at Northwestern. /Graphic by Nick Villalobos

The prize for the first place was \$200; the prize for second was \$100. Nonetheless, that event was canceled due to a lack of student participation.

Now, the question is why is there such low student participation on Northwestern's campus?

When asked some students on campus believe that it could be plain laziness of the student body, some students believe that some people are too busy and occupied with work and

school to attend on campus events, while others believe that the events held on campus are frankly uninteresting and not worth attending. However, Dean of Student Affairs Calleb Mosburg has a concept of his own.

"What interest students five years ago, six years ago don't necessarily interest students that are here right now and it's a continual change and

See LACKING, page 2

SGA event seeking more participants

The Northwestern Student Government Association will be hosting "The Voice Northwestern," and all are encouraged to participate.

The competition is scheduled to kick off at 6:30 p.m. March 9 in the Herod Hall auditorium. Cash prizes will be awarded for the top three competitors in the amount of \$150 for first place, \$100 for second place and \$50 for third place.

Only the first 15 entries will be accepted. A maximum of four minutes will be allotted per performance.

Prior to the event on March 9, a mandatory rehearsal is scheduled for 5 p.m. March 8 in the Herod Hall auditorium. If you will not be able to make it to dress rehearsal, you will need to get in contact with Kaylyn Hansen or you will be disqualified from the competition.

It will also be at the

See "VOICE," page 2

Scholarship

Beelers benefit NWOSU science, nursing students

Bill and Linda Beeler established the Beeler-Stites Family Scholarship to honor their family lineage at Northwestern and to continue their support of the Alva community and university students.

Northwestern and the Beeler family share a long history of alumni starting with Bill's grandfather, William "Bill" Stites - class of 1915. Since William "Bill", several Beelers have passed through Northwestern's doors, including Bill and Linda, Kevin Beeler, '96; John Beeler, '90; Rick Beeler, '87; Brenna (Beeler) Heaton, '11; Therese (Beeler) Gustavson, '11; Dalton Beeler, '14; and Patricia Beeler who is currently enrolled. Their granddaughter, Riley Beeler, also plans to attend Northwestern after high school.

"We visited with Skeeter [Bird, CEO, Northwestern Foundation & Alumni Association] in 2007 to see how to set up a scholarship because we could not pay the \$10,000 endowment all at once," said the Beelers. "We were told we could pay on a scholarship fund until we reached the goal for which we were striving. On June 11, 2007, we made our first payment totaling \$200. Ten years



Courtesy of University Relations

Bill and Linda Beeler

later, our endowment is paid in full. This was a great way for us to give back to Northwestern and ten years went by so quickly!"

Bird said he is proud of Bill and Linda for their commitment to Northwestern students.

"The Beelers are an excellent example of a family committed to Northwestern with their time, with their diplomas and with their philanthropy," said Bird. "To all of us, they have demonstrated that perseverance and dedication pay off."

The Beelers chose to set up their scholarship specifically for science and nursing students because of the amount of time they spent in hospitals with a son.

"Our son, Kevin, developed

See SCHOLARSHIP, page 12



Tiffany Wilson accepts the \$50 bookstore gift card upon winning the Northwestern News photo contest. /Photo by Nick Perkins

Wilson victorious in photo contest

Tiffany Wilson, Conway Spring, Kansas, freshmen, early childhood education major, entered the Northwestern News "Can you guess where this is on campus" photo contest, and upon having her name drawn on Monday, she was declared the winner of the \$50 Northwestern bookstore gift card.

"The contest was really fun and helped me and my friends explore more of the campus. It was a really neat idea to get the students involved!," Wilson said.

News

Lacking

From page 1

interest of what students want to do," Mosburg said. "And you see that in social media where we started from Facebook, to Twitter, to Snapchat and things that continually move on and that shift has happened within three years."

So, maybe it is the ever-changing technological age that is keeping students from participating with events on Northwestern's campus. Maybe some students don't see the point in going out and engaging in face-to-face communication when they can easily communicate with people through a screen.

Nonetheless, Mosburg said that SGA is always willing to take feedback from students on what they are interested in and what they would like to do.

Villalobos still urges student to go out and participate in not only SGA events, but events held by various clubs and organizations held on campus throughout the semester.

"Take a break from homework, get out of the dorms, look up from your phones and get involved. I guarantee you want regret it," Villalobos said.

"Voice"

From page 1

discretion of the Northwestern Student Government if the performance is deemed appropriate or inappropriate.

Those interested in participating will need to fill out and turn in the application by 5 p.m. March 7 to the Housing Office, Fine Arts Rm. 131.

The application is located in student's Northwestern email's. Potential participants may also be able to pick one up at the Housing Office.

"This competition, despite it being called 'The Voice,' is not just for those with singing talents," said, Nick Villalobos, SGA president. "We SGA officers want to see everyone that attends classes at this university attend this event. And, those with any type of talent, we want to see you step out of your comfort zone a bit and participate in it as well. Who knows, by doing that you could just take home the top prize too."

For further information, contact Kaylyn Hansen at (580) 327-8418 or klhansen@nwosu.edu.



The Northwestern rodeo team helped LaDeeDa relocate to its new location on Friday. Photos courtesy of rodeo team

NWOSU rodeo team volunteers time Friday

By SAMANTHA MCGUIRE
Staff Reporter

Northwestern Oklahoma State University rodeo team took Friday afternoon off from practice to help the Alva community.

LaDeeDa, a boutique on the square needed help moving from one location to another. Stockton Graves, head rodeo coach, set up a time the entire rodeo team could meet to help move. Students gathered at 1 p.m. on Friday, and cleared the place out in less than two hours.

Students worked together, under the instruction of Dee Wiedener, store owner, to lift large tables, boxes and other miscellaneous items into student trucks. The trucks were driven a few blocks down the street and unloaded into the new location.

Michaela Preedy, NWOSU rodeo member, was a close friend of Wiedener. "I most definitely think helping the community is important. The community is such a huge part of what keeps the rodeo team going," Preedy said.

Graves and Wiedener coordinated over the course of a few months to put together a time the rodeo team could help. Graves estimated about 15 kids



Rodeo members, Jenny Massing, Berk Long and Mason Bowen help remove Christmas decorations from the LaDeeDa basement.

to help Wiedener move, and over 40 students showed up to help.

"I am so appreciative of [the help]," Wiedener said, "and I am choosing to make a donation to the rodeo team, and I can't thank them enough."

Wiedener was not only appreciative about the rodeo team's help, but also said what a benefit Northwestern is to the community. "Northwestern is invaluable to our community," she said. "Without the college none of us [community businesses] would probably survive."

LaDeeDa was previously owned by Wiedener's mother, and has been apart of the family for 35 years. The name itself is also a family trademark.

"My grandmother used to say 'ladeeda' sarcastically when someone would do something," Wiedener said, "and I tried to figure out a way to tie my name into [the business]. I was lying there one night and I was thinking about grandma, and she'd have said 'well ladeeda.'"

So Wiedener used her first name for the middle and that's where the name originated.

News Flash

Northwestern softball coach resigns post

Northwestern Oklahoma State University softball coach Charlie Zeilman submitted his resignation today, which is effective immediately.

Athletic Director Brad Franz has appointed current assistant coach Jill Webb as acting head coach for the remainder of the season.

Scholarship cut off date approaches

Applications for the Randy Murrow Memorial Scholarship are now available.

Students interested in applying can print the form out or come by Student Services in the Fine Arts building and pick up a copy.

They are also available on the bulletin board of Student Government office in the Student Center.

The selected scholarship recipient must be an undergraduate actively involved in campus activities at Northwestern Oklahoma State University.

The scholarship recipient will receive the award during the 2017-2018 academic year.

The scholarship may be given to more than one recipient if the scholarship committee deems it necessary.

The deadline to apply for the scholarship is March 10.

To turn in the applications students can do that at the Students Services Office, Fine Arts 126, located on the Alva Campus.

Please contact Student Services at 327-8415 or the Student Government Association if you have any questions.

Woods County Democratic Party

If you are concerned about civil rights, inequality and additional issues concerning America, please join us at Champs on March 2nd

Social begins at 6pm and dinner at 6:30pm

Entertainment by Alva High School Speech Department

*** cost covered for Northwestern students with valid ID**

THE VANILLA BEAN

10% OFF
LARGE BEVERAGE



EAST OF
GAMBINOS

The Way We See It

Editorial Section

Simon Say's

Environment is cause of Millennials behavior

This excerpt comes from a video entitled "Simon Sinek on Millennials in the Workplace."

Part IV: We're taking this amazing group of young, fantastic kids who were just dealt a bad hand and it's no fault of their own, and we put them in corporate environments that care more about the numbers than they do about the kids. They care more about the short-term gains than the life of this young human being.

We care more about the year than the lifetime. We are putting them in corporate environments that are not helping them build their confidence. That aren't helping them learn the skills of cooperation. That aren't helping them overcome the challenges of a digital world and finding more balance.

That isn't helping them overcome the need for instant gratification and teach them the joys and impact and the fulfillment you get from working hard on something for a long time that cannot be done in a month or even in a year.

So we thrust them into corporate environments and the worst thing is they think it's them. They blame themselves. They think it's them who can't deal. And so it makes it all worse. It's not them. It's the corporations, it's the corporate environment, it's the total lack of good leadership in our world today that is making them feel the way they do.

They were dealt a bad hand and it's the company's responsibility to pick up the slack and work extra hard and



find ways to build their confidence, to teach them the social skills that their missing out on.

There should be no cellphones in conference rooms. None, zero. When sitting and waiting for a meeting to start, instead of using your phone with your head down, everyone should be focused on building relationships. We ask personal questions, "How's your dad? I heard he was in the hospital." "Oh he's really good thanks for asking. He's actually at home now." "Oh I'm glad to hear that." "That was really amazing." "I know, it was really scary

for a while there." -- That's how you form relationships.

"Hey did you ever get that report done?" "No, I totally forgot." "Hey, I can help you out. Let me help you." "Really?" -- That's how trust forms. Trust doesn't form at an event in a day. Even bad times don't form trust immediately. It's the slow, steady consistency and we need to create mechanisms where we allow for those little innocuous interactions to happen.

When we are out with friends, as we are leaving for dinner together, we leave our cell phones at home. Who

are we calling? Maybe one of us will bring a phone in case we need to call an Uber. It's like an alcoholic. The reason you take the alcohol out of the house is because we cannot trust our willpower. We're just not strong enough. But when you remove the temptation, it actually makes it a lot easier. When you just say "Don't check your phone," people will just go to the bathroom and what's the first thing we do? We look at the phone.

Check out rangerpulse.com, under the editorial tab, for the conclusion of this article.

Salad a day keeps blues away

By **ASHLEY STREHL**
Staff Writer

When we were kids, we did everything we could to avoid food that was the color green.

Our parents would tell us it will help us grow big and tall, but we weren't sure if that alone was worth it. I am here to tell you that five servings of vegetables, or a simple salad a day, can keep you from having stress, and anxiety.

When students are stressed we often resort to foods that can be bad for us like, potato chips, or ice cream. We hope that after eat-



ing something that tastes salty, greasy, or sweet, it will help us feel better, but these are actually the worst things that you can put in your body in times of stress.

According to the Physicians

Committee for Responsible Medicine, fatty foods thicken our blood, and make us feel tired, while vegetables are high in antioxidants, and can boost our immune system.

Sugar is high in carbohydrates, but unfortunately, cake does not make the world go around. Sugar carbohydrates enter and leave the blood stream rapidly, causing that "crash" that a person feels a few hours after their latte.

When you're studying for an exam, substitute a bag of Doritos for some raw celery. Instead of a

Monster Energy drink, definitely consider a cup of black coffee, or peppermint tea.

At moderation, don't be afraid to enjoy a bowl of chocolate ice cream.....with some peas on the side.

For more information on healthy living practices, visit the [Physicians Committee for Responsible Medicine website](http://Physicians Committee for Responsible Medicine) and search healthy topics.



Spring Break photo contest details

Dear readers,

For the Spring Break photo contest, we are asking participants to send appropriate photos of what they did during the week off to the Northwestern News e-mail, nwnews@nwosu.edu.

We are also asking that with each of the photos sent to us that they contain the following cut line information: Who is in the photo, what are they doing, when was it take, where was it located and why were you there.

We will select a winner based off of the creativeness of the photo content. Entries are **due March 19** by midnight.

-Northwestern News

NORTHWESTERN NEWS

Official Newspaper
Northwestern Oklahoma
State University

Published weekly throughout the school year except during examination periods and holidays and distributed to students and staff.

Spring 2017 Staff

Editor-in-Chief
Nick Villalobos

Assistant Editor
Megan Maharry

Feature Editor
Savannah Tillman

Sports Editor
Sami McGuire

Photo Editor
Ashley Strehl

Advertising Manager
Bailey Rankin

Circulation Manager
Katie Lackey

Production Managers
Caitlin Coody
&
Deitra Wedd

Online Manager
Bruno Miguel

News office: Jesse Dunn Annex
232
Telephone: 327-8479; Fax: 327-8127
E-mail: nwnews@nwosu.edu
The News is printed by the Alva Review-Courier

The opinions and comments contained in the Northwestern News are those of the writers and do not necessarily reflect the policies or beliefs of the university administration, Board of Regents of Oklahoma Colleges or the editorial staff. The News gladly accepts submissions but does not promise they will be used.

AFFIRMATIVE ACTION COMPLIANCE STATEMENT

This institution, in compliance with Title VI and Title VII of the Civil Rights Act of 1964, Title IX of the Education Amendments of 1972, sections 503 and 504 of the Rehabilitation Act of 1973, the Americans with Disabilities Act Amendments Act of 2008, and other applicable federal laws and regulations, and to the extent required by law, does not discriminate on the basis of race, color, national origin, sex, age, religion, genetic information, physical or mental disability, or status as a veteran in any of its policies, practices, or procedures. This includes, but is not limited to, admissions, employment, financial aid, and educational services.

Inquiries concerning the application of these programs should be made to Caleb Mosburg, Director of Student Affairs, Northwestern Oklahoma State University, 709 Oklahoma Boulevard, Alva, OK 73717, (580) 327-8415.

This publication, printed by Northwestern Oklahoma State University, is issued by the University as authorized by the Regional University System of Oklahoma. 1,600 copies have been prepared and distributed at a cost to the taxpayers of the State of Oklahoma of \$368.00.

LETTERS TO THE EDITOR

Letters to the editor shall bear the author's handwritten signature, hometown, classification, title, etc., address and phone number for verification and shall be kept on file. Unsigned letters to the editor will not be published.

Letters must be turned in by noon on Tuesday to the News office in JDA232. Letters via e-mail are acceptable as long as they follow the rules stated above and can be sent to nwnews@nwosu.edu. Please limit submissions to no more than 250 words. The editors reserve the right to condense or edit any letter for grammar, libel and space limitations. All letters submitted may not be used.

All letters represent the views of the author.

SUBSCRIPTIONS

Yearly subscriptions to the News are \$15.00.

Opinion

Expectations for Kong film are raised high after trailer

By **NICK VILLALOBOS**
Editor in Chief

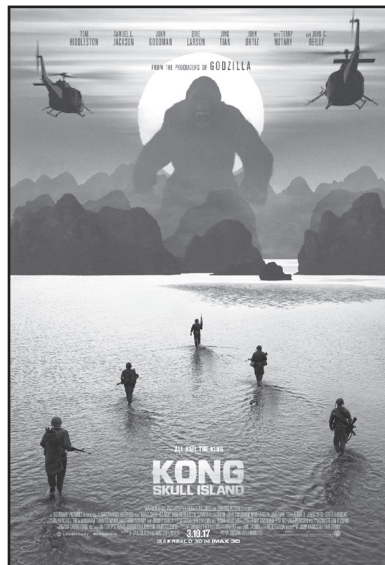
After watching the final trailer for the upcoming Kong: Skull Island film, I'd have to say, the full length film might actually be something that will draw me to the theaters.

Kong: Skull Island is directed by Jordan Vogt-Roberts, and will feature an outstanding cast, one of which features the likes of 2016 Oscar winning actress, Brie Larson, 2017 Golden Globe winner actor, Tom Hiddleston and the man, myth and legend, Samuel L. Jackson.

Also starring in the film is the always hilarious John C. Reilly and Mr. James P. Sullivan or "Sully," himself from 'Monster's Inc.,' John Goodman.

Along with the awesome cast, Kong: Skull Island looks to have a great storyline as well.

The film is set back on 1971, and will feature a team of explorers accompanied by a group of soldiers searching for the island of lore and legend; Skull Island. Upon searching for the legendary island, the team discovers not only the island itself, but vast array of



creatures that live on it as well, including Kong himself.

Another cool thing with this film, and one of the reasons I will be going to watch it when it hits theaters March 10, is that it is in the same monster movie universe as the 2014 film, Godzilla, which means a battle between the two monster giants [Kong and Godzilla] is inevitable.

So when this movie hits theaters, the actors and actress, the story as well as the push towards the Kong versus Godzilla battle will be what draws me to this film; Kong: Skull Island.

Hats off to the laptops

By **CEDRIC COLLINGE**
Student Writer

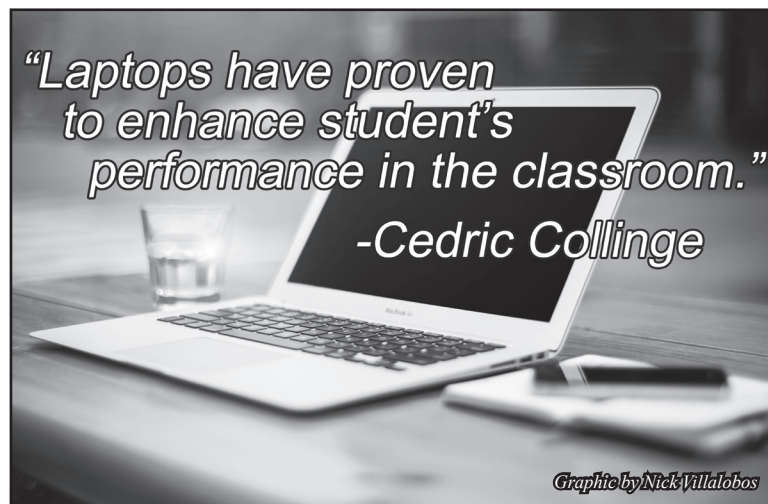
I myself, am a student who has experienced laptop use in high school and used textbooks my previous and college years, which is more than enough experience to realize what is better.

Projects, class work and other educational purposes are all reasonable points why we need a laptop to resort to if textbooks are not fulfilling our needs.

All student have different methods of learning and laptops are a balance to level the field for all achievement levels. We are our future and so forth generation after generation we will grow bigger, faster, and stronger as a community and technology will grow with us.

Laptops have proven to enhance student's performance in the classroom, teaching new techniques and preparing for future purposes. Opponents of the classroom laptop program cite such issues such as possible distraction, hardware maintenance and technical issues.

We are in the era of ad-



vanced technology where the culture thrives off the interactive devices, three dimensional televisions, and I pads.

Teachers have noticed that when students use laptops it provides more classroom interaction for kids and creates a lively classroom environment. The ability to work in group settings and children's willingness to work in groups is now becoming easier thanks to laptop use.

According to Piscataquis Community High School Study two-thirds of teachers (64 percent) agree that ever since the laptop program was introduced to their classrooms, student achievement is developing, and work quality for students in the

projected at-risk or low achieving demographic has improved as well (PCHS Laptop Final pg. 4).

Well above 60 percent of all jobs require some sort of technological skill. With that said, this number will only get higher and our community will begin relying on such high tech devices. A student who was asked about their opinion on laptops state their grades had improved with the use of laptops.

Laptops have proven to help a student's interaction with teachers, group projects, and their peers. Only 10 percent of teachers say that laptops have led to a student's decline in their education.

The power of oneself

By **MONTANA McCULLOUGH**
Student Writer

I hate when people say that nobody is perfect, but you have to also remember that nobody is completely flawed either.

Everybody on Earth has some sort of flaw that they aren't happy with. But the good thing about knowing your flaws it that you can try and fix them. I hate when people are judged on what they did in the past.

I am the type of person who doesn't judge people based on their past. I see the good in people and know they are more than what has happened to them. People judge others too much

on things they have heard and not actually getting to know the people they are judging.

No matter how many people say you can't do something because of your past, look them in the face and say oh yes I can. People thought I would never go to college, but I'm now a junior and doing well. You have to believe in yourself before anyone else will believe in you.

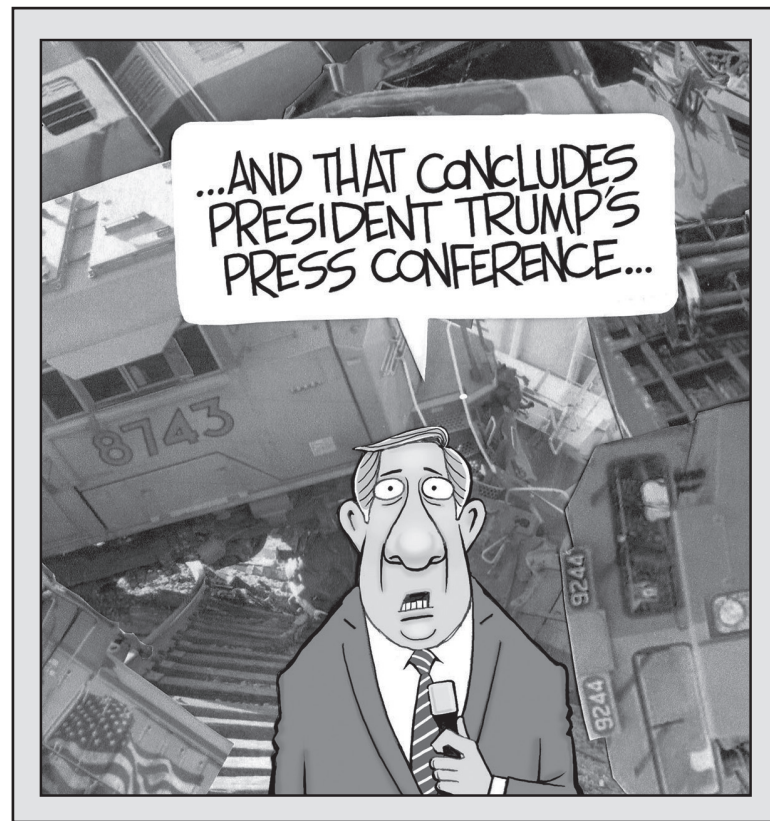
There are people in your life who will always believe in you but you have to believe in yourself before others can see it. I believe that if you believe in yourself that you will feel better about yourself and work harder. All you have to do is tell yourself

that you can do anything you set your mind to.

The only person in this world that you need to impress is yourself. All it takes is for you to truly think that you can do the things that people say you can't. It drives me insane when people tear down people's dreams.

People don't know what others are capable of doing. People's' past are what push them to do better than what they had. The only thing that should drag people from their dreams are their own minds.

If you get anything out of this article, let it be to be nice to others. And never let anyone tell you that you can't do something.



Northwest Oklahoma Concert Series

Northwest Oklahoma Concert Series (NWOCs) is an organization that seeks to bring cultural performances and entertainment to northwest Oklahoma! Only two performances left for spring 2017!

NWOCs is supported by Northwestern, the Oklahoma Arts Council, the National Endowment for the Arts and the Charles Morton Share Trust.

STUDENT TICKETS ONLY

\$5

Tuesdays @ 7 p.m.

Enid Symphony & NWOSU Chorale
March 7, 2017

Bella Donna - April 25, 2017

Alva's Market

Where your grocery dollar stretches farther!

706 Flynn

Incredible Deals!
2-22 through 2-28

Country style ribs family pack \$1.59 lbs.	Shurfine ice cream 14.4 oz for \$4.99
Russet potatoes 10 lb. bag for \$1.79	Shurfine granulated sugar 4 lb \$1.69
Shurfine cinnamon rolls \$1.89	Shurfine soda 3 liter bottle \$1.00 each

Feature

Senior Spotlight

Cali born, Ranger made

By CEDRIC COLLINGE
Student Reporter

From southern California, where the sun shines all the time, to tornado valley Oklahoma, Austin Klug had a big change of scenery the past couple years.

The question is how do you leave a beautiful state, like California, to come to a little town, in plain 'ole Oklahoma?

"Basketball is my immediate answer," Klug said. "Basketball and Northwestern Oklahoma State University program, had it all for me."

In Riverside, California, Austin relied on the beautiful outdoors and a basketball to get him where he wanted to be. Height is usually something coaches look for in players and he was right up that alley, standing at a whopping 6-foot-9-inches. His father, brother and himself all belong to the 6-foot-5-inches and above club. So he thanks his father for giving him a great trait to have, so the pursuit of college basketball would be that much



Austin Klug/ Photo provided

easier.

Austin took his talents to a little south beach in California, Mt. San Jacinto College, where he had the opportunity to play junior college basketball. He became a standout player in his conference, nearly averaging a double-double over his two years of attendance.

"Everyone wants to go D-1 (Division 1), but it just didn't work out the way I had hoped," Klug said. "Coach Brad Franz spoke so highly of Northwestern, I couldn't turn him down."

Brad Franz was the head

coach of Northwestern men's basketball, at the time, and he did not want to pass up on a player like Austin. The 6-foot-9-inch big man had only one offer up until Franz snagged him, to aid the Rangers basketball team, for the next two years.

During the 2015-2016 season, Austin helped lead the men's, basketball team to a 9-win season his first year. His senior season is where he made his presence known, leading the team as senior captain to a 12-win season, just barely missing a spot in the conference tournament.

Austin spoke highly of his senior year. "My senior year, here in Alva, will be unforgettable, from the team to the whole community," Klug said. "I'll cherish it forever."

Austin will graduate in May 2017, with a degree in Criminal Justice; however, his plans to of a job do not follow that major. "I want to get my degree then as soon as I can open my own food truck here in Alva that serves good cheap food at all hours of the day," Klug said.



Campus Confession

What movie would you want to be a part of...

By CAPRI GAHR
Student Writer

Tanner Smith, a senior and biology major, thought the answer was obvious. He would be part of the movie "Land of The Lost."

In 2009, Brad Siberling directed "Land of the Lost," a movie based on the Sci-Fi television show that began in 1974 and ended after 2 years of seasons, in 1976.

In this movie, actor Will Ferrell plays Dr. Rick Marshall, who gets sucked into a space-time vortex along with his assistant, who is played by Anna Friel, and their survival guide played by Danny McBride.

In this world of Dinosaurs and creatures, they come across an unlikely ally, a Primate named Chaka, played by Jorma Taccone.

IMDB has this Sci-Fi comedy rated with almost 6 stars and it has 9 award nominations. Although, Smith thinks this movie is a 10 out of 10.

Smith's goal in this adventure, is to travel back in time with his new pal Chaka, explore the ancient world and help conquer the Lizard Men who are threatening Chakas home.

Anything can happen, so hopefully one-day Smith can meet his Chaka and conquer the Lizard Men.

News Feature

Just a small town girl living in a rodeo world

By KATY HART
Student Reporter

She gives them encouragement, through the long hours as the rodeo team practices in the arena.

Micalah Preedy, a senior at Northwestern Oklahoma State University is not on her horse in the practice pen; she is now one of the assistant rodeo coaches.

It was the familiar small town atmosphere, along with an enthusiastic rodeo coach who welcomed Preedy to attend Northwestern where she now pursues a bachelor's degree in sports psychology.

She grew up in the rural town of Meade, Kansas where her interest for rodeo began at an early age.

"I've been riding horses my whole life," she reminisced. "One of my first memories is riding a horse with my daddy."

Preedy is one of four student rodeo coaches who assist Stockton Graves and



Barney, one of a few horses that Micalah owns, is her barrel racing horse and has been with her for a couple years./ Photo by Katy Hart

oversees the more than 100-member rodeo team at Northwestern.

She competed in barrel racing and break-a-way roping for four years on the same team she now coaches.

"It is very different not competing anymore and being on the other side of things," Preedy said. "But I hope I can take what I've learned and help others in

their career."

After she obtains her bachelor's degree, she plans to continue her education by receiving her master's degree in adult education management and administration.

Preedy will continue to help with rodeo team practice. Even if it means coaching in the Oklahoma heat. She will be there.



"This is as far as we can go, but they do have a Web site we can visit."

Featured Look



Northwestern Territorial Normal School was founded in 1897 by the legislative assembly. It consisted of two female teachers and a president for the school, who were elected by the board of education for the normal schools of Oklahoma. It first began in the Congregational Church in Alva but quickly outgrew that and the school moved to a permanent location and became known as "The Castle on the Hill." / Photo provided



In 1935, the castle caught fire. The above photo was taken after the fire. The building was torn down and Jesse Dunn now stands in its place. / Photo provided



Jesse Dunn now stands where the castle once did. The front doors of Jesse Dunn face College street, where the front entrance of the castle was. Jesse Dunn was built during the great depression and was a part of a government project to create jobs. It, along with two other buildings, were constructed in 1937. Many people comment on the crazy architecture of Jesse Dunn, which was just the style that the architect was going for at the time. / Photo provided



Campus History

'The Castle on the Hill'

By Victoria Schnauer
Student Reporter

Northwestern students know the tales of ghosts around campus at night and the "reasoning" behind all of the stairs in Jesse Dunn. The real question is, what are the facts behind the stories students and faculty hear so often?

The historical aspect of Northwestern runs through the blood of the community. "Northwestern wouldn't exist if it wasn't for the support of the Alva community," said John Barton, Northwestern alum and historian. Alva would not be as successful without Northwestern being strategically placed in the center of town.

In 1897, Northwestern Territorial Normal School was founded by the legislative assembly. The board of education for the normal schools of Oklahoma elected two female teachers and a president for Northwestern and opened its doors for the first time at the Congregational church in Alva. The school swiftly grew from enrollment of 55 to 166. With enrollment continuing to grow at Northwestern, the school was given an additional teacher and the Baptist church while still keeping the Congregational Church. The school was starting to outgrow the local churches and in

March 1898, the Board of Education allowed the school to contract a new building. Northwestern moved to a permanent location, known as "Castle on the Hill" on Sept. 11, 1899. At that time, enrollment numbers totaled 413, making Northwestern the largest learning institution in Oklahoma at its time.

The Castle became an icon for Northwestern. The building had four stories and 36 rooms, each being 30 feet by 40 feet or bigger. The building had its own heating and gas system. The gas system was located in a smaller building set off to supply the building with lights. Later, the science building, now Fine arts, and Herod hall was added on to campus. In 1935 the Castle burned to the ground leaving only rubble behind. There were three students left in the building on the top floor that had to get down from the roof.

Jesse Dunn was built to replace the castle. The front doors of the new building are directly in front of College street, where the castle's main entrance once stood. The majority of stories about the Jesse Dunn are based on the fact that it was built during the Great Depression. The city of Alva participated in a government project to create jobs for residents. Jesse Dunn was built with workers from the project but was architecturally designed to be

the way it is now. Going upstairs to get down was the style the architect decided to go with when designing the building.

Dorms were unheard of during the beginning of Northwestern's history. Some students were living in the castle because of lack of housing options. Students found places to live in the community of Alva, renting rooms from people in the community is how students stayed around campus, according to Barton.

In 1939, Vinson hall and Shockley hall were named dorms. Vinson hall was an all-male dormitory, and Shockley Hall was for females. At the time room and board was only \$19.25 per month. Eventually Vinson hall was reconstructed to hold classes and now holds the English, Foreign Language and Humanities Departments, the Speech programs and University Relations. Shockley hall is home to the Department of Mathematics and Computer science.

South hall was established as a female dorm in 1961. Coronado hall was established in 1967. Oklahoma hall was also built in the 60's to the East of the president's house. It was knocked down shortly after being closed in 1986 because of an asbestos problem according to Wayne Layne, a historian and Northwestern alum,

in his book a Centennial History. The garden now takes its place.

Northwesterns renovations happened in a rough patch of United States history and with the help of a few families and the community of Alva construction was able to go under way. The cost of the three projects, Jesse Dunn, the Annex and the Education center totaled \$545,000. The new buildings on campus were dedicated to Northwestern on March 12, 1937. Eleanor Roosevelt came to Alva for the dedication. Over two thousand people crowded into Wyatt Gym for Roosevelt's speech.

The school added on several other buildings as time went on. The Wyatt Gymnasium, Newby field ticket booth, a library, a newer science building, a President's house, a school farm, new athletic buildings and fields and eventually more dorms.

Joe J. Struckle Education center is known as the education building to current students of Northwestern. The building was once named Horace Mann building and was built in 1936 along with Jesse Dunn and the Annex. Horace Mann was intended to house elementary and high schools for Alva public schools to train teachers in the Education Department. The building remained a training school for Alva until

1946 when it became Horace Mann Elementary and the high school students were transferred to Alva High. In 1962, Northwesterns growing numbers required more rooms and took over the building with renovations. In 1963, Horace Mann became the Education Center.

The Wyatt gymnasium is now the student center. The building has been reconstructed several times to make it what it is now. It became the Student center in 1965 after Percefull Fieldhouse was constructed to be a gym and a field house for athletics. The Newby football field now stand where the practice field and J.R.Holder wellness center are now. The ticket booth still stands. The Ranger field and Myers baseball stadium were constructed in 1969, moving football and baseball off the main campus. It was the first time Northwestern broke ground outside of the initial 40-acre lot designated to the Normal School. Recent renovations have been made to the Ranger field and Myers stadium that include a new field house, the Dean Linder press box and replacing the grass fields with turf.

"Northwestern has made many renovations and will continue to make more," said Steve Valencia, Vice President of University Relations. Upcoming renovations include updating the campus mall

area in front of the library and will extend to the east side of Jesse Dunn to make the area more user friendly. The dorms have been undergoing construction as well, one building at a time starting with the showers of Ament and a complete remodel of Fryer hall. "We are continuing with projects to update these facilities during the summers," said Valencia.

Barton wrote a play shortly after the death of his friend Layne about the beginning history of Northwestern and the burning of the castle, students faculty, staff and community members alike performed and made the play successful.

"Preservation of Northwesterns history is important to the community," said Barton "A committee was put in place to give each building a historical marker, letting all who walk by see the impact it has made on campus." The committee also established a historic walking trail.

Northwestern has been providing people with a higher education for over a hundred years. Several down falls helped establish the rich history engraved on campus today.

"Help from all of those who wanted to see the university succeed managed to fight and uphold an outstanding school," said Valencia.

FAST FACTS THEN & NOW

1897 The school started out as Northwestern Territorial Normal School.

NOW: It is now known as Northwestern Oklahoma State University.

1897 The faculty and staff of Northwestern Territorial Normal School consisted of two female teachers and a president.

NOW: There are now several members of the faculty and staff at Northwestern Oklahoma State University.

1899 Enrollment numbers totaled 413, making Northwestern the largest learning institutions in Oklahoma.

NOW: Enrollment numbers totaled 413, making Northwestern the largest learning institution in Oklahoma.

1899 When the castle was first build, dorms were unheard of and many students rented rooms from Alva residents.

NOW: Now, Northwestern has four dormitories, two female and two male. While students can still stay off campus, they have dorms available.

1939 When Vinson Hall and Shockley hall became dormitories on campus, room and board costs were \$19.25 per month.

NOW: Current room and board costs range anywhere between \$4,300 and \$6,000 per year, depending on the room and board plan the student chooses.

Graphics and page design by Rachel Emerson

Northwestern Oklahoma State University Renovation Timeline

1897 Northwestern Territorial Normal School was founded by the Legislative Assembly.	1899 Northwestern moved to a permanent location known as "The Castle on the Hill."	1935 "The Castle on the Hill" was burned, leaving just rubble.	1937 Three new building were dedicated to Northwestern, including Jesse Dunn, Carter Hall and Horace Mann.	1939 Vinson Hall and Shockley hall were established as dorms. Vinson as a mens dorm and Shockley as a womans dorm.	1961 South Hall was established as a female dorm.	1963 Horace Mann became known as the Education Center.	1965 Wyatt gymnasium became the Student Center after Percefull Fieldhouse was constructed.	1967 Coronado Hall was established as a male dorm.	1968 Oklahoma Hall was closed because of an asbestos problem. It became the garden area.	1969 Ranger field and Myers baseball stadium were constructed.	2015 Ranger field and Myers baseball stadium were updated.
--	--	--	--	--	---	--	--	--	--	--	--

Entertainment

Book Review

'Everything Everything'

By DEITRA WEDD
Staff Writer

Madeline Whittier is a girl with a very rare disease, called severe combined immunodeficiency (SCID) or as it's more commonly known bubble baby disease.

To have bubble baby disease means that Madeline Whittier is allergic to the world, and needs a protective bubble around her at all time to survive. The protective bubble is Madeline's house, a house that she, an 18-year-old girl, hasn't left for seventeen years.

Olly is the guy next door who struggles to deal with a father who has a habit of going into a drunken rage. Olly has just moved in to the bedroom with the window directly across from Madeline's.

He wears black, never seems capable of staying still for

very long, is always doing seemingly impossible tricks, and is curious about the girl next door who he has only ever seen through a window.

From the moment she lays eyes on Olly, Madeline's curiosity is piqued. The same seems to hold true for Olly.

He begins writing mirror image notes on his window for her to read after successfully catching and keeping Madeline's attention. Soon their mirrored notes turn into IM's as they begin a friendship unlike any other.

With Olly's friendship comes the ultimate price, the beginning of hope. Hope that leaves Madeline desperately wanting to go outside and live a normal life.

Olly's arrival in Madeline's life also brings about the spark of a love so strong that it just might be worth dying for. This is the kind of love that can either kill someone like Madeline, or show her how to live.

Everything Everything, by Nicola Yoon, is a novel, and soon

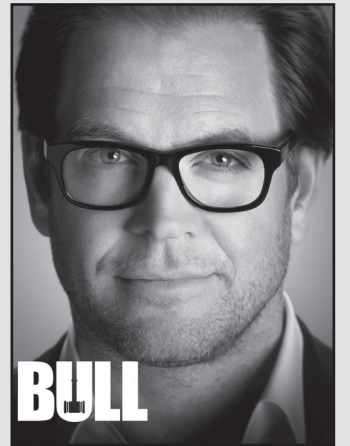


to be movie according to Variety magazine, with page after page of inspirational writing.

The cute characters and horrifying curve balls that are thrown their way, keep the readers entranced for hours as they flip through pages in a rush to realize the conclusion of this gripping novel.

Solving cases with psychology, 'Bull'

By DEITRA WEDD
Staff Writer



The first season of Bull came to television with an all new way of laying down the law. Dr. Jason Bull (Michael Weatherly) is an expert in his field, and his chosen field is psychology and trial science.

As the head of the Trial Analysis Corporation (TAC) Bull uses his expertise as a psychologist, his intuition, and high tech data to help his clients.

His job is to analyze a court room and all the people in it. Bull must then use his analysis to help his client and his client's lawyers to convince the jury of the client's innocence.

By being able to see inside the minds of those who may want to convict his clients, Bull is able to manipulate the hearings by swaying the jury in his favor.

This gives him the upper hand in the trials and leads to successfully proving his client's innocence, even when the case proves challenging.

With the technology at his disposal, Bull can see what the jury's decision will be before they even reach their final deci-

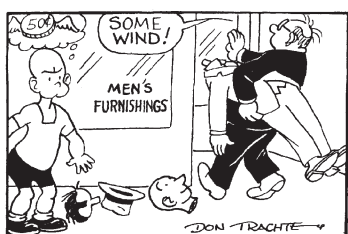
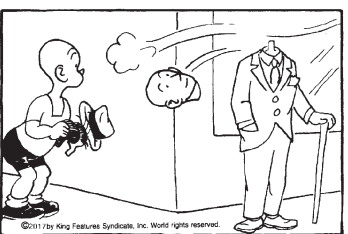
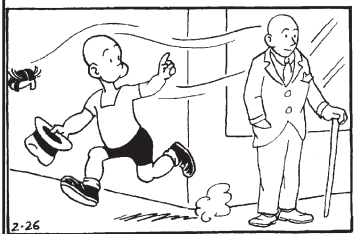
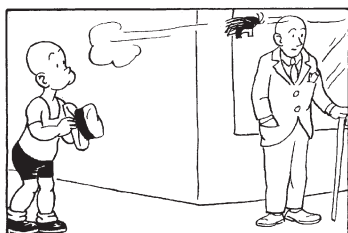
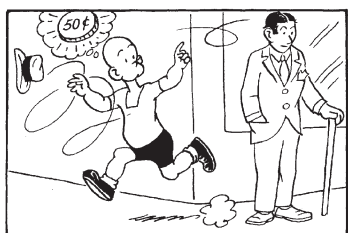
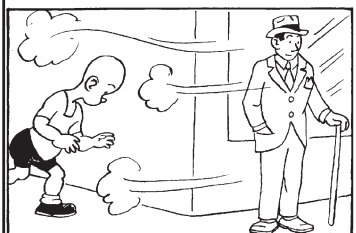
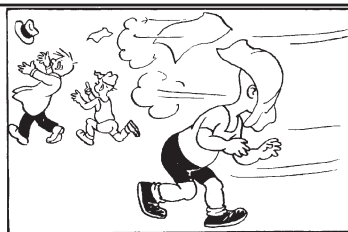
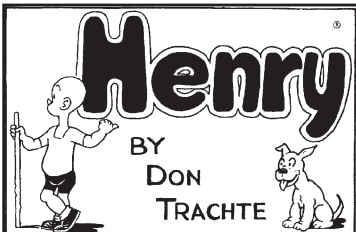
sion or before they even make their first decision.

By knowing who is against his clients Bull can determine who the lawyers need to focus on to win the case.

He can take what he learns about each person in the court room and use it to persuade them to change their mind, by using questions that will get him the results he wants.

When the son of a millionaire comes to his door, Bull uses his knowledge to spot the juries dislike for one of the lawyers.

He also uses his brilliance to find a way to make the jury feel a connection to his client, and to find the truth behind his client's involvement in the case.



King Crossword

ACROSS

- 1 Do as you're told
- 5 A cont.
- 8 Old fogey
- 12 Geometry measure
- 13 Born
- 14 Divisible by two
- 15 Soared
- 17 Choose the best
- 18 Japanese pond carp
- 19 With resolution
- 21 Twelve
- 24 Highway division
- 25 Saharan
- 26 Demonstrated, as when on strike
- 30 Chaps
- 31 Chess wins
- 32 Consumed
- 33 Sank a billiard ball
- 35 Caspian feeder
- 36 Addict
- 37 William Tell's target
- 38 Formosa, today
- 41 Annoy
- 42 - Major
- 43 Fined for speeding, e.g.
- 48 Indonesian island

1	2	3	4	5	6	7	8	9	10	11
12				13			14			
15			16				17			
			18			19	20			
21	22	23			24					
25				26				27	28	29
30				31				32		
33		34					35			
			36				37			
38	39	40				41				
42				43	44			45	46	47
48				49				50		
51				52				53		

- 49 High-arc shot
- 50 Basin accessory
- 51 Help in a crime
- 52 "Tasty!"
- 53 Annoyingly slow
- 8 Edict
- 9 Egg
- 10 Farmer's home?
- 11 Sans siblings
- 16 A billion years
- 20 Tattoo-parlor supply
- 21 Moist
- 22 Sandwich cookie
- 23 Brass component
- 24 Metric measure
- 26 Obviously
- 27 Rainout cover
- 28 Common Latin abbr.
- 29 Strike from
- embarrassed
- the text
- 31 Smaller plateau
- 34 Persian Gulf nation
- 35 Maintenance
- 37 Noah's boat
- 38 Big brass instrument
- 39 Bedouin
- 40 - of Capri
- 41 Cold War weapon (Abbr.)
- 44 Debt notice
- 45 Pair
- 46 "A mouse!"
- 47 Parched

© 2017 King Features Synd., Inc.

Sandwich Shoppe

530 Flynn
Alva, OK 73717

PHONE (580)-327-2798

OPEN FOR BREAKFAST 6-10 LUNCH 11-2

GREEN CHILI BREAKFAST BURRITOS, BELGIAN WAFFLES

SPECIALTY SANDWICHES, WONDERFUL SOUPS, SALADS AND MORE!

WITH A CLUB CARD EVERY SEVENTH MEAL IS FREE

10% OFF WITH STUDENT ID

King Crossword

Answers

Solution time: 21 mins.

Answers from last week

E	V	E	L	O	A	N	S	P	T	A	
L	I	U	O	R	G	A	N	L	O	T	
F	I	R	E	P	L	A	C	E	A	G	O
S	P	A	R	E	D	C	A	P			
H	A	P	P	E	N	E	R	I	E		
U	R	L	D	D	T	S	A	K	E	S	
L	E	A	P	O	H	S	L	I	M	E	
A	S	C	O	T	O	P	S	C	M	A	
E	G	A	D	A	W	A	K	E	N		
M	E	M	O	I	R	R	I	O			
A	L	A	P	A	R	K	P	L	A	C	E
T	A	T	A	M	P	L	E	H	O	W	
E	N	S	N	A	M	E	D	A	P	E	

Entertainment

Movie Oscar winners of 2017

Calendar of Events

March 3

Oklahoma Research Day
8:30 a.m. - 3:30 p.m.
Off Campus Locations
-Enid Central National
Bank Center, Enid
OK

March 4

CEOE Teacher Testing
-OGET/OSAT/OPT E Examinations
9 a.m. - 2 p.m.
Industrial Education
-Computer Lab & Little Office

March 7

Community Read Event for Visiting Writer Mary Anna Evans
6:00 PM - 8:00 PM
Science - Science Amphitheater

Student Support Services Monthly Event
6:00 PM - 9:00 PM
Student Center - Student Center Ranger Room

Northwest Oklahoma Concert Series
7:00 PM - 9:00 PM
Herod Hall - Herod Hall Auditorium

March 8

FCA Meeting
8:30 p.m. - 10:00 p.m.
Coronado Hall - Ranger Perk

March 9

Talent Show
6:30 p.m. - 9:30 p.m.
Herod Hall - Herod Hall Auditorium

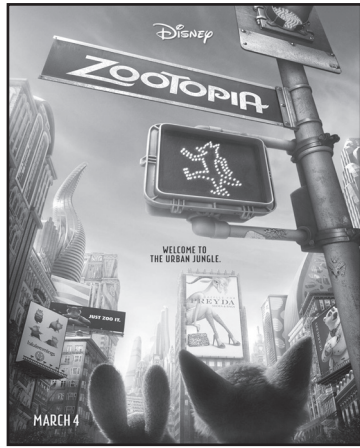
March 15

FCA Meeting
8:30 p.m. - 10:00 p.m.
Coronado Hall - Ranger Perk

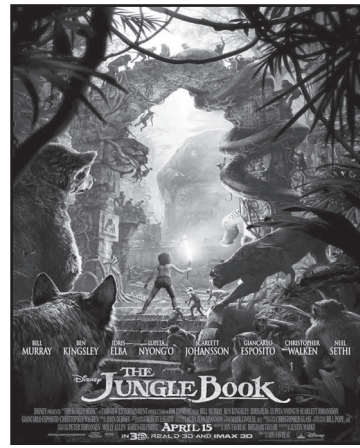
Best Original Music Score: La La Land



Best Animated Feature Film: Zootopia



Best Visual Effects: The Jungle Book



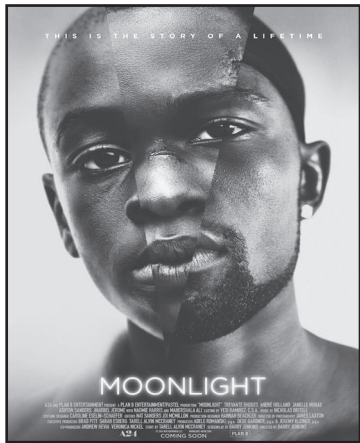
Best Documentary Feature: O.J.: Made In America



Best Original Screenplay: Manchester by the Sea



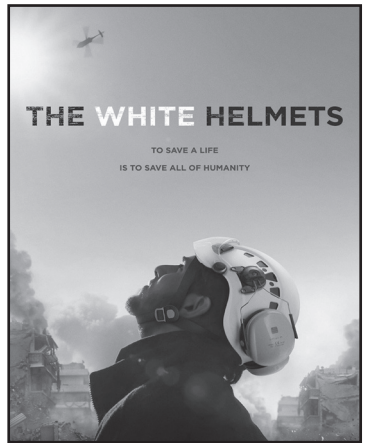
Best Picture & Best Writing Adapted Screenplay: Moonlight



Best Foreign Language Film: The Salesman



Best Documentary Short Subject: The White Helmets



Amber Waves

by Dave T. Phipps

ANOTHER COLD AND DREARY DAY WAITING FOR THE SCHOOL BUS.

IF MY PARENTS WERE RICH MAYBE I COULD SKIP SCHOOL AND HAVE FUN.

HEY WHAT IF WE WON THE LOTTERY!

NAH, KNOWING MOM SHE WOULD JUST BUY THE SCHOOL A NICER BUS.

Rialto
ENTERTAINING ALYA SINCE 1929

Visit us on Facebook or call
580.327.0535
580.327.1900

Thursday Last Night "Fist Fight" and "Lego Batman" 6:45 nightly

Starts Friday!
Friday: 6:45pm- 9pm
Saturday: 1:30-6:45-9:00
Sunday: 1:30-6:45
March 6th-9th: 6:45 nightly
Screen 1/ R/ 141 min.

Nightly at 6:45
Friday: 6:45-9:00
Saturday: 1:30-6:45-9:15
Sunday: 1:30-6:45
March 6th-9th: 6:15 nightly
March second last night!
Screen 2/ R/ 120min.

Nightly at 6:45
Friday: 6:45-9:15
Saturday: 1:30-6:45-9:15
Sunday: 1:30-6:45
March 6th-9th: 6:45 nightly
Screen 3/ PG-13/ 132 min.

March 10th "Kong: Sull Island"
March 17th Disney's "Beauty and the Beast"

NORTHWESTERN NEWS MEDIA

GET CONNECTED - STAY CONNECTED

Sports

Baseball loses in Arkansas

By RANGERS ATHLETIC DEPARTMENT

Northwestern took the road this weekend to take on the Arkansas Tech Wonder Boys, but came up empty on the weekend, following two tough losses on Saturday, 9-3, 9-2.

Four Ranger batters took aim on the afternoon, hitting .500 or better, as Nathan Kane (.500), Steven Deckard (.600), Arturo Castro (.667) and Colton Krokroskia (1.000) were the visitor players to have lots of success at the plate.

Game One

Starting on the hill for the Rangers in game one of the second day was freshman, Nick Llorente who went 5.2 innings, recording five strikeouts, but surrendered six runs as well. The Wonder Boys were solid at the plate in the first of the twin bill, collecting 12 hits off the four Ranger pitchers.

Northwestern was the first team to strike in game one, plating two runs on a Garrett Douglas single, bringing around Castro and Deckard. The timely single would give the visitors their first lead of the series.

The lead wouldn't last long however as ATU would find the plate



Baseball team gathers together during game against Arkansas Tech. /Photo Provided

twice in the bottom half of the third on a double and a walked in run.

The Rangers wouldn't go away quietly however as they would take the advantage again following a Deckard homer to left field, his first of the season.

That would unfortunately end

the scoring for the visiting team in the contest.

The Wonder Boys would tie it up in the bottom of the fourth, but would pull away in the sixth and the lead would climb from there, and finish at 9-3 in favor of the home team.

Game Two

The second game of the day, and third of the series was a tough one for the Rangers as the Arkansas Tech pitching staff overpowered the visitor bats, allowing just four hits and two runs in the game.

Matthew Bickford was given the start in game three of the series,

pitching four and one-third innings, but unfortunately came away with his first loss of the season. Sean Rydell and Nesseralla were the two to come on in relief.

Four different batters earned base hits in the game, as Deckard was 1-for-1, while Kane was 1-for-2, and Colton Krokroskia and Jorin Van Amstel went 1-for-1 and 1-for-3 respectively.

Arkansas Tech started off the scoring in the game in the first inning, but wasn't able to plate any more until the fifth inning.

Again the game looked like it could go either way as the Rangers tied it back up at one apiece, on a passed ball that scored Douglas from third.

The tie ballgame would dissipate quickly however as ATU put six more on the board in the fifth, making it a six-run lead, 7-1.

The Black-and-Red would gain one more run on a Quincy Tunstall score, but that wouldn't turn out to be enough, as the Rangers fell by a score of 9-2.

Baseball will stay at home Friday and Saturday to compete against Southeastern Oklahoma State University.

Softball double-header loss

By RANGERS ATHLETIC DEPARTMENT

Northwestern Oklahoma State Softball hosted Arkansas Tech in a Great American Conference double-header to conclude the weekend series Saturday. The Rangers would end up losing both games to the Golden Suns, wrapping up a tough weekend for Northwestern.

Game 1

The Rangers ran into yet another fantastic pitching performance, Madison Garza had a strong outing as well on day two, going six very strong innings before running into some trouble in the seventh.

Arkansas Tech took the lead in the top of the first after an error by Brittany Corrales allowed Sarah Coronado to score the game's first run. Northwestern threatened in

the bottom half with two runners on, but couldn't seem to gain any momentum off of the ATU starter.

Garza would hold the Golden Suns scoreless through the next two frames, leaving three runners stranded.

But her defence would stumble in this one, as a fielding error by Jordan Sutton came around to score in the fourth, leading to Arkansas Tech's second unearned run of the ballgame.

Senior second baseman Amber Mills was finally able to crack ATU's pitcher with one out in the sixth, singling up the middle for what turned out to be the only hit the Arkansas Tech pitcher would allow.

The top of the seventh saw ATU put up four runs (three earned) on three hits and an error, ending Garza's day with two outs

in the inning. Head coach Jill Webb brought in Jalena Arthur to close out the inning, and she did just that by retiring Sydnie Henson with a groundout to third.

Unable to mount a comeback, the Rangers fell 6-0 in the first game of the doubleheader. Garza would go six and two-thirds, allowing three earned runs on 10 hits and three walks while striking out five in the loss.

Game 2

With hopes of ending recent slide, Northwestern took to the field in the second game behind the arm of sophomore Karly Murray. Murray breezed through a clean first inning, setting the stage for the Rangers to strike first in the bottom half.

Junior college transfer Madi Parrott started a two-out rally with a single up the middle past

the diving shortstop. Madison McGraw followed that up with a hit of her own and advanced to second on a throwing error by Arkansas Tech shortstop Sarah Coronado, allowing the speedy Parrott to score from first. Audrey Estes then drove in McGraw to cap off the two-run first inning for the Rangers.

Murray allowed three runs on four hits in the third, momentarily giving the visitors the advantage. But a determined and hungry Northwestern squad had an answer in the next half.

Mills got the ball rolling with a hit into right field, which Parrott and McGraw followed up with back to back walks. With the bases loaded and nobody out, the Golden Suns went to Morgan Vaughn to replace the fading Sydnee Clark in the circle.

The move appeared to pay

dividends for head coach Kristina McSweeney as Vaughn induced two straight groundballs, gunning down two would be runs at the plate.

But with two outs in the inning, a wild pitch and a Megan Sanders single cashed in three runs for the Rangers, giving them a 5-4 lead heading to the fourth.

The fifth inning proved to be the decisive blow for the Rangers, as the Golden Suns tagged the Rangers for seven runs in the frame. With the deficit seemingly impossible to overcome, Northwestern eventually lost the series finale 12-5.

Mills, Estes and Brittany Corrales all went 2-for-4 in the loss.

The Savage Storm will host Northwestern in a 1 p.m. doubleheader on Friday and in a 12 p.m. doubleheader on Saturday.



Alva State Bank

IN ALVA SINCE 1901

MEMBER FDIC

& Trust Company

Alva
518 College Ave.
580.327.3300

Burlington
580.431.3300

Enid-Chisholm
801 W. Broadway
580.234.4201

Bank of Freedom
Branch of Alva State Bank
Freedom Okla.
580.621.3276

Sports

Record breaking night

By RANGERS ATHLETIC DEPARTMENT

The Northwestern Oklahoma State men's basketball team saved their best performance of the season for the final game as they set season highs in nearly every offensive category in a 112-86 victory over Ouachita Baptist.

The Rangers closed out their season with a game that included multiple records broken as points came early and often.

The season-high in points scored for the Rangers was the third most points scored by a team in a game in the Great American Conference all season.

The 62 percent shooting percentage from the floor was the best percentage a team has shot in a conference game this season. The 19 three pointers the Rangers converted on now stands as the most any team in the conference has made this year.

Along with imprinting their team name across multiple scoring



Rangers playing during their final season game. /Photo by Caitlin Coody

ranks in the conference this season, two Rangers etched their names in the record books with their performances.

A season-high 33 points from senior Adrian Motley along with eight rebounds established his name atop the school's all-time defensive rebounding list (533).

Motley also moved into

second place on the school's all-time free throws made list while junior Brandon Green has now produced the most assists in a single season with 172, while moving into second all-time in the category.

The exciting afternoon of Ranger basketball started by honoring four seniors that finished

up their careers in style. Motley's 33 point performance could possibly earn him the league's scoring title depending on how the rest of the afternoon's game shake up while fellow senior Deiondray Martin netted a season-high 21 points in his final game in a Ranger uniform.

Senior Austin Klug also finished his career inside Percefull Fieldhouse with a bang, hitting his first career three pointer as a Ranger in just his second attempt, making him a career 50 percent shooter from behind the arc.

Junior Cody Halvorson joined in on the fun and filled up the stat sheet as well with 27 points, including hitting 8-of-9 three pointers during the game. As a team the Rangers hit 19-of-29 from long range.

The incredible shooting percentage from the Rangers never allowed the Tigers to keep pace in the contest. Northwestern jumped out to a 60-37 lead at halftime and led by as many as 45 in the second half.

Rangers claim victory in final home game

By RANGERS ATHLETIC DEPARTMENT

Northwestern Oklahoma State's women's basketball team sent their three seniors out on a high note with a 72-71 victory over Ouachita Baptist on Saturday afternoon.

A fast start to the contest that saw the Lady Rangers jump out to a 14-point lead midway through the opening quarter allowed Northwestern to edge out the Lady Tigers in the end. Junior Kalea King finished off her outstanding season with 21 points and seven boards, making her final case for post-season accolades that should be coming her way.

The story of the evening however was the three seniors that played their final games inside Percefull Fieldhouse. Senior Ashley Pride concluded her Lady Ranger career with a phenomenal afternoon, totaling 13 points while posting a season high eight assists in the game.

Fellow seniors Jonae Isaac and Relina Johnson also attributed in big ways to the Lady Rangers final win of the season. Johnson totaled eight points for the Lady Rangers.

The Lady Rangers stormed out of the gates and opened up an 18-4 lead in the first five minutes of the contest. The solid play continued throughout the rest of the quarter as a jump shot from junior Kori Barrios gave the black-and-red a 24-14 lead at the end of the first quarter.



Isaac's playing offense on senior night. /Photo by Caitlin Coody

After their outstanding start to the game, the Lady Rangers struggled a bit in the second quarter, and after four points from Isaac right before the two minute mark, the Lady Rangers couldn't convert on a field goal for the remainder of the half, allowing Ouachita to narrow the lead to just 28-27 going into the halftime break.

Ouachita came out with the same intensity they showed in the second quarter and quickly took their first lead of the ball game just 12 seconds into the third quarter. But three consecutive three-point buckets from the three seniors gave the Lady Rangers the lead back at the 6:03 mark.

Ouachita could only manage to tie the game up one more time before King took the ball game over and scored eight points in the final quarter of play. A free throw from Pride with one second remaining proved to be the winning point.

Mens golf loses to OPSU at spring season opener

By RANGERS ATHLETIC DEPARTMENT

The Northwestern Oklahoma State men's golf team opened up their spring season with a loss to Oklahoma Panhandle State in the annual OPSU/NWOSU Dual.

The Rangers opened up play in their spring season after a successful fall season that saw them set new records for the program and defend their home tournament with a victory, but disappointed in their first action of the spring semester.

The Ranger linksters battled windy, cold conditions at Sunset Hills Golf Course in Guymon.

Oklahoma Panhandle defeated the Rangers with a team score of 301. The Rangers posted a team total of 304, led by junior Cole Ward, who got off to his spring campaign in solid fashion with a round of 74. Junior Clayton Davison also recorded a score of 74, a season low for the Ranger newcomer. Ward and Davison's

rounds of 74 placed them in a tie for second, three strokes behind individual champion Ruben Figueiredo of Oklahoma Panhandle, who garnered individual medalist honors for the duel.

The rest of the Rangers team was rounded out by rounds of 77 from freshman Joah Mitchell, 79 from Tulsa native Parker Rehorn, and an 83 from freshman Cody Hixon. Competing as individuals for the Rangers were senior Drew Sims, sophomore Aaron Dobbs, and sophomore Collin Stork. Stork led the way for the individuals with a 78, while Dobbs and Sims finished with rounds of 79 and 81 respectively.

The Rangers will have a few weeks to regroup before getting back out on the course on March 13-14 in Russellville, Arkansas. at Chamberlyne Country Club.

The always-competitive field at the Dave Falconer Classic will give the Ranger men a stiff test, with multiple regionally ranked teams expected to compete in the event.

Athletic Events

March 3

Softball

1 p.m. Rangers at Southeastern Oklahoma State University

3 p.m. Rangers at Southeastern Oklahoma State University

Baseball

6 p.m. Ranger vs. Southeastern Oklahoma State University

Rodeo

Rangers at Fort Scott Community College

March 4

Softball

12 p.m. Rangers at Southeastern Oklahoma State University

2 p.m. Rangers at Southeastern Oklahoma State University

Baseball

1 p.m. Rangers vs. Southeastern Oklahoma State University

4 p.m. Rangers vs. Southeastern Oklahoma State University

Rodeo

Rangers at Fort Scott Community College

March 5

Rodeo

Rangers at Fort Scott Community College

Womens Golf

Rangers at Diffie Open

March 6

Womens Golf

Rangers at Diffie Open

March 7

Womens Golf

Rangers at Diffie Open

Baseball

1 p.m. Rangers at Oklahoma Panhandle University



Community Bank

Open a Ranger Account and get free stuff!

RIDE
RANGERS
RIDE!

- Free t-shirt
- Free initial ATM/Debit Card
- Internet Banking

Member
FDIC

• ATM located in NWOSU Student Center (no fees for Community Bank customers!)

1729 College Blvd. in Alva | (580) 327-5500 | www.bankalva.com

The Buzz



Where have they walked?

Scholarship

From page 1

juvenile onset diabetes at the age of four and many days were spent in the hospital with doctors and nurses caring for him and giving him support,” said Linda. “This motivated us to create a scholarship at Northwestern to financially help students who are pursuing careers in the medical field.”

Bill and Linda accomplished a goal of theirs in endowing the Beeler-Stites Family Scholarship at Northwestern and want to see it help others achieve their goals.

“If you want it, go after it. Hard work is how you achieve goals in life – they don’t just happen. You get out of life what you give to life,” said Linda.

Full-time, continuing students majoring in science or nursing with a minimum 2.5 cumulative grade point average are eligible for the Beeler-Stites Family Scholarship. Preference will be given to applicants with the greatest perceived need by the Scholarship Committee. The scholarship may be applied toward university-related expenses, including tuition, fees, books, room and board.



Left: Freshman biology major Rhianna Chesser from Kansas, Okla. said they’ve been in Las Vegas and they’re going to Colorado in a few weeks./ Photo Erin Hopkins



Left: Greg Carrington a sophomore psychology major from Toronto, ON, Canada said they’ve been all over the eastern sea board and they’re going to the Northwestern hall of fame./ Photo by Erin Hopkins



Above: Braylyn Graybill a sophomore elementary education major from Alva, Okla. said they’ve been to class and they’re going to work./ Photo by Erin Hopkins